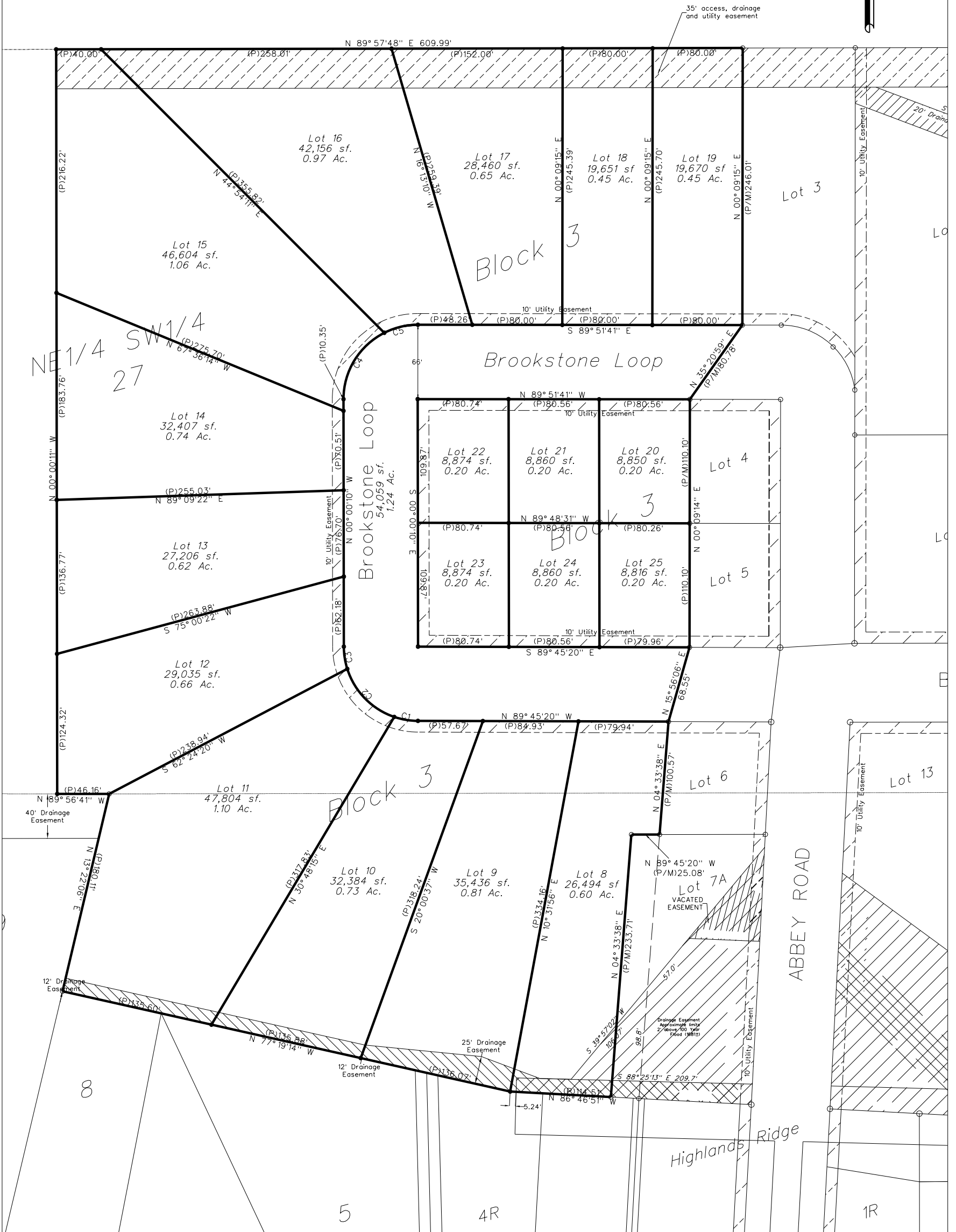
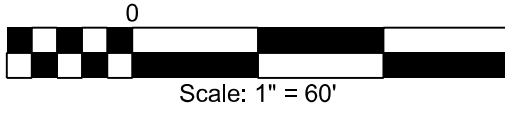


Plat of Lots 8 through 25, Block 3, and a portion of Brookstone Loop, Brookstone Addition

located in the Northeast Quarter of the Southwest Quarter in Section 27, Township 111 North, Range 79 West of the 5th P.M., City of Pierre, Hughes County, South Dakota



Curve	Radius	Length	Chord
C1	66.00'	21.43'	21.34'
C2	66.00'	61.88'	59.64'
C3	66.00'	20.08'	22.00'
C4	66.00'	72.81'	78.18'
C5	66.00'	31.02'	30.74'

- Legend**
- = Monuments Set
5/8" x 24" Rebar
and cap No.6118
 - = Monuments Found
 - (M) = Measured Distance
 - (P) = Platted Distance
- = 10' Utility Easement

3030 Airport Rd., Ste. A • Box 23
Pierre, SD 57501
Ph: 605.224.1123

Brosz
ENGINEERING, INC.
ARCHITECTURE ENGINEERING SURVEYING